

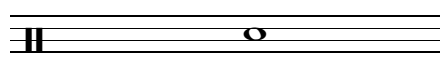
# Note Values: An Overview

This work sheet is intended to be an overview of all essential note values to help you identify notes for further research. I've included all common note heads for each value, I also refer to each in both English and American names.

For more information please view the appropriate work sheets for each.

## Semi Breve / Whole Note

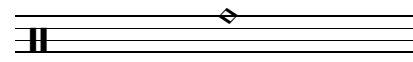
Lasts for 4 beats. Is a hollow note head with no stem. This is indicated in cymbal notation by a circle surrounding the x.



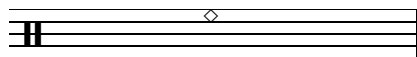
standard



cymbal



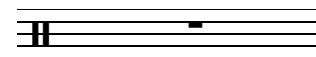
bell



rim of shell



cowbell



rest

## Minim / Half Note

Lasts for 2 beats. Is a hollow note head with a stem. This is indicated in cymbal notation by a circle surrounding the x.



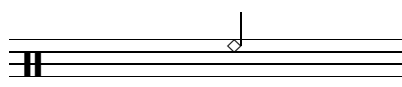
standard



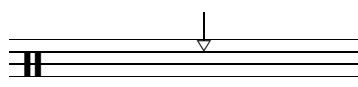
cymbal



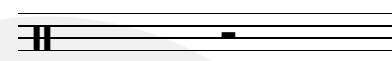
bell



rim of shell



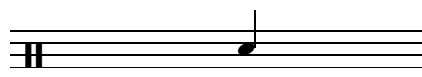
cowbell



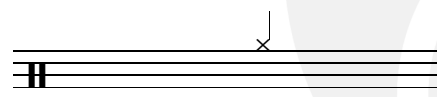
rest

## Crotchet / Quarter Note

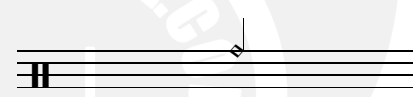
Lasts for 1 beat. Is counted with straight numbers (1 - 2 - 3 - 4). Is a filled in note head with a stem.



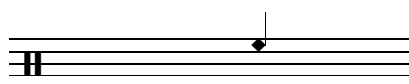
standard



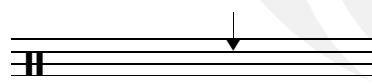
cymbal



bell



rim of shell



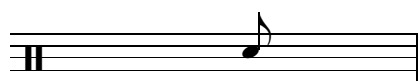
cowbell



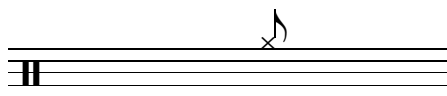
rest

## Quaver / Eighth Note

Lasts for half a beat. Is counted with straight numbers split with 'And' counts, often shown as '+' (1 + 2 + 3 + 4). Is a filled in note head with a stem that has one tale coming off the top.



standard



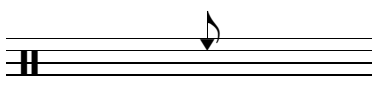
cymbal



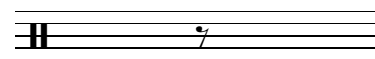
bell



rim of shell



cowbell



rest

When a row of eighth notes appears they are joined together by a 'beam'. They can be found in groups of 2, 3 or 4 as shown below.



8th notes in groups of 2



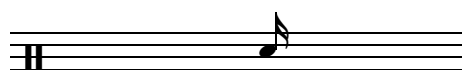
8th notes in groups of 4



8th notes in groups of 3

## Semi Quaver / Sixteenth Note

Lasts for quarter of a beat. Is counted with straight numbers and 'And' counts, split up further by 'e' and 'a' counts (1 e + a 2 e + a 3 e + a 4 e + a). Is a filled in note head with a stem that has two tales coming off the top.



standard



cymbal



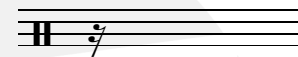
bell



rim of shell



cowbell



rest

As with eight notes, when a row of sixteenth notes appears they are joined together by a 'beam'. They can be found in various groups depending on the time signature. Some examples are shown below.



16th notes in groups of 4



16th notes in groups of 2



16th notes in groups of 6